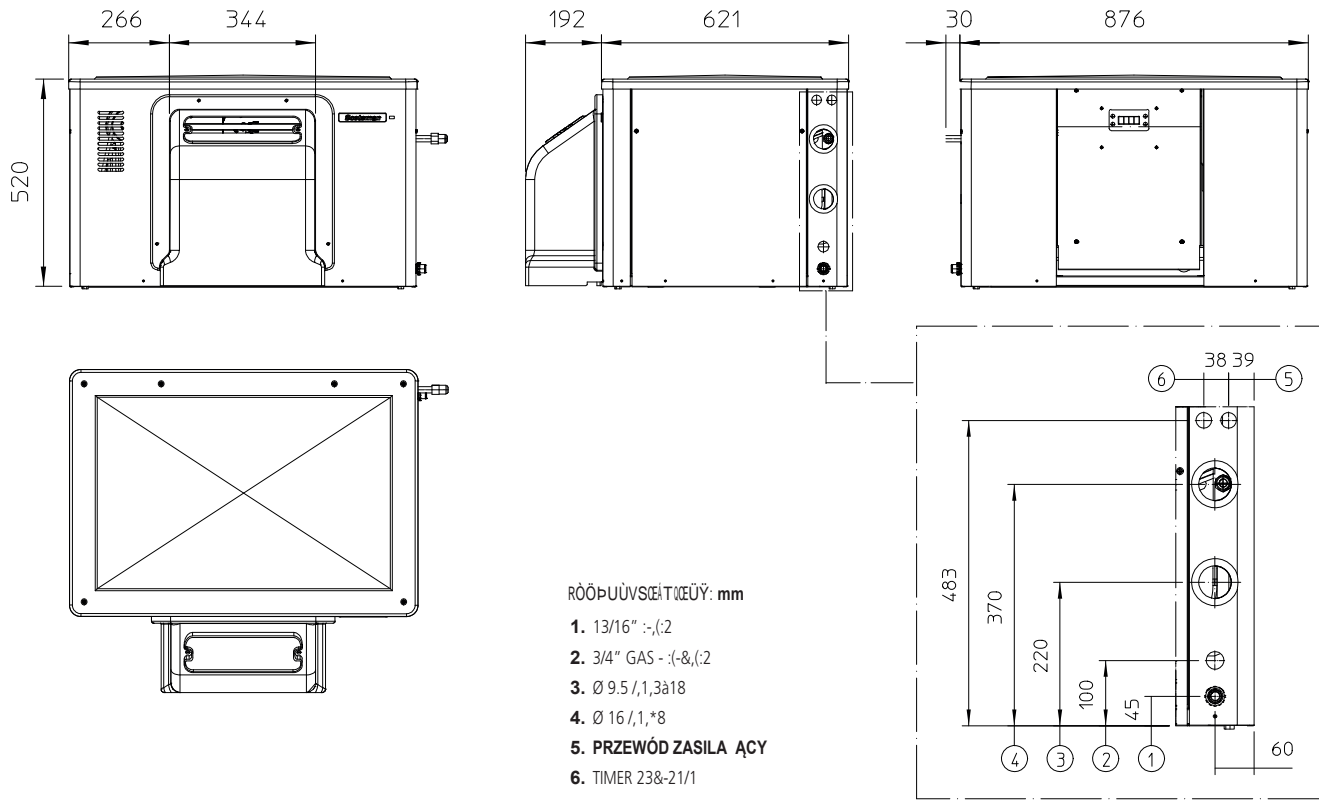


T [ã ˇÿ[, æÁ , ^c , [!}ã&æÁ|[ã ˇÁ { æçÁF€€€Á\ *



1(85(1, Wymiary (W x D x H) 906 x 813 x 520 mm Waga netto 95 kg		1(6.2: (Karton (W x D x H) 980 x 740 x 680 mm Waga 112 kg												
Version	Voltage	24 h ice production kg °C Amb. / °C Water				Energy consumption (*)		Water usage (*)	Instant power	Compressor	Circuit wires	Max. fuse size		
		10°C/10°C		21°C/10°C		32°C/21°C		kWh/100 kg	kWh/24h	l/h	W	W	No. x Ømm²	A
MAR 129 SPLIT	400/50/3N	n.a.	1000	n.a.	1000	n.a.	760	0.6	4.5	32.1	200	5500	5 x 2.0	10
Compressor:		(Te -25.0°C; Tc +10.0°C)												

(*) Data refer to 32°C Amb. / 21°C Water temperature conditions

T [ã ˇÿ[, æÁ , ^c , [!}ã&æÁ|[ã ˇÁ { æçÁF€€€Á\ *